

TW77BY

# Riverside

## HOUSE

Railshead Road, St Margarets  
Old Isleworth, Middlesex

Air-conditioned office suites  
by the River Thames  
To Let on Flexible Leases from  
1,280 sq ft - 7,492 sq ft



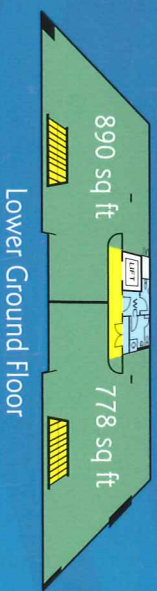
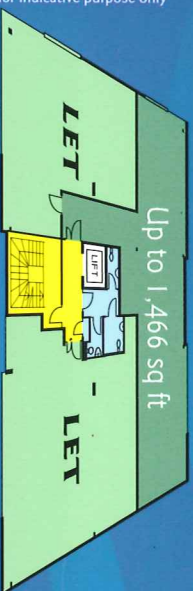
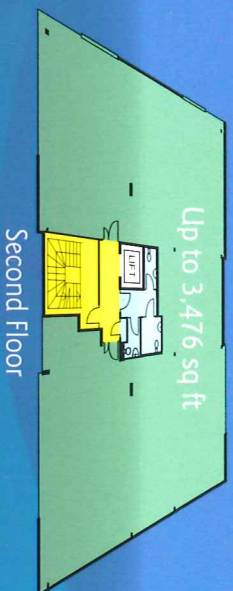
Riverside House enjoys an idyllic setting on the banks of the River Thames, close to picturesque Old Isleworth with its range of restaurants, shops and pubs, yet easily accessible by foot, bus and road to the amenities of St. Margarets and Richmond.

This modern and individual riverside office building provides new air-conditioned office suites ready for fitting out by occupiers to their individual needs.

- Air Conditioning
- Passenger Lift to All Floors
- Raised Access Floors
- Perimeter Trunking to Lower Ground Floor
- Excellent Parking On and Off Site
- River Views



Plans not to scale for indicative purpose only



\* Ground and Lower Ground Floor to be let together

## Journey Times

Heathrow Airport	20 mins
Central London	30 mins
Hounslow Town Centre	6 mins
Twickenham Town Centre	5 mins
Richmond Town Centre	8 mins
M3 (VIA A316)	5 mins
A4	5 mins
M4	8 mins

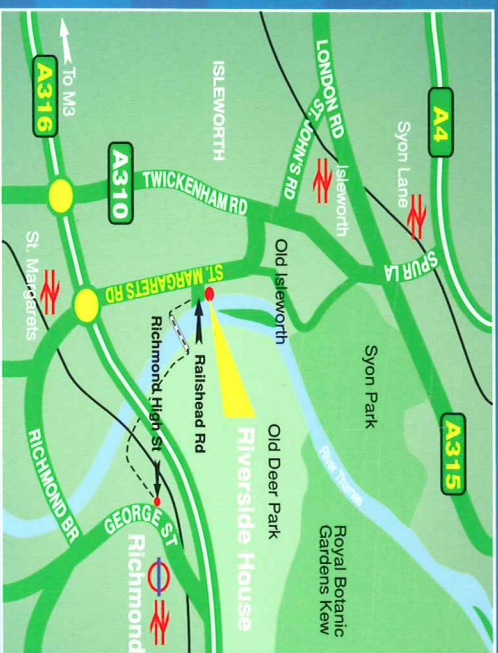
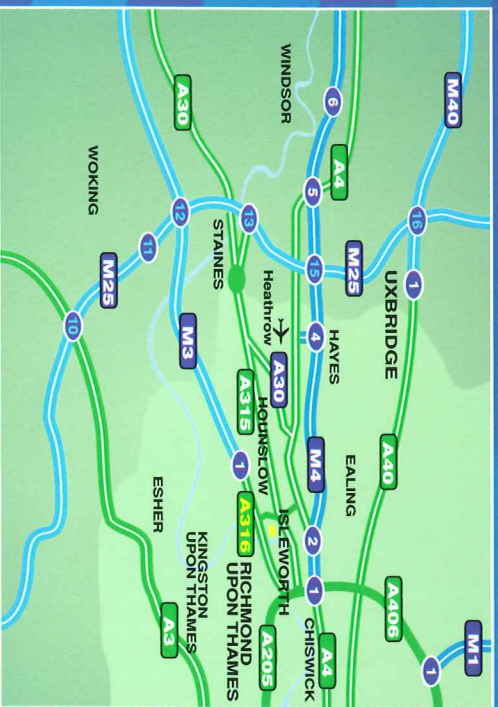
## Train Times

Islworth to London Waterloo	33 mins
Islworth to Hounslow	4 mins
Islworth to Staines	24 mins
St Margarets to London Waterloo	38 mins
St Margarets to Kingston	13 mins

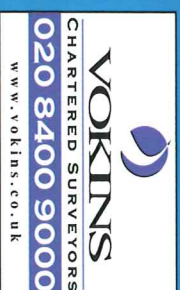
## Bus Routes

H37 - Hounslow to Islworth for St Margarets station and Richmond station	every 6 mins
H26 - Islworth to Fulwell	every 20 mins
267 - Fulwell via Islworth to Hammersmith Grove	every 20 mins
117 - West Middlesex Hospital Islworth to Staines	every 20 mins

Note: all journey times quoted are approximate.



01494 671331



PROSPECT HOUSE, 67 BOSTON MANOR ROAD, BRENTFORD, MIDDLESEX TW8 9JQ



020 7935 3553  
WWW.CLPROP.CO.UK  
Damian Lambourn 07796 953360  
dnl@colcomm.com

www.riversideoffices.com